

A joint collaboration between Stark County Public Health Agencies:

Alliance City Health Department

Canton City Public Health

Massillon City Health Department

Stark County Health Department

Stark County, Ohio

May 13, 2021 Epi Report

**COVID-19 Snapshot
Stark County, Ohio
as of 12:00pm
May 13, 2021**

Level 1

Level 2

Level 3

Level 4

Stark County is currently at a **Level 3 (Red)** Status as indicated by the Ohio Public Health Advisory System-**Indicators 1 & 3 were met.**

For information on the Ohio Public Health Advisory System, please visit: <https://coronavirus.ohio.gov/wps/portal/gov/covid-19/public-health-advisory-system/>

Confirmed Cases

Total:
27,567

Active/Open Cases:
13,520

Closed:
(includes Deaths)
14,047

Closed due to Death:
822

Probable Cases

Total:
4,969

Active/Open Cases:
2,522

Closed:
(includes Deaths)
2,447

Closed due to Death:
139

Hospitalized Confirmed & Probable Cases

Yes:
(includes ICU)
1,876

Yes, ICU:
153

Discharged:
972

Age Range

Confirmed Cases:
<1-108

Hospitalized in Confirmed Cases:
<1-105

Deaths in Confirmed Cases:
21-108

All data contained is preliminary and is subject to change as more information is reported to Ohio Department of Health (ODH). Data presented in this document is based on data as of 5.13.2021 12:00 pm (for Stark County data) and/or 2:00pm (for Ohio data). Cases from previous days are likely to change as more information is entered. Caution should be exercised as data is subject to change. Numbers may differ from ODH depending on time data was accessed.

For questions regarding this report, please contact:

Amanda Archer, MPH aarcher@cantonhealth.org

Jessica Boley, RD, LD jboley@cantonhealth.org

Chelsea Sadinski, MPH SadinskiC@starkhealth.org



Stark County Epi Situational Report - COVID-19

Table 1 as of: 5/13/2021 12:30PM

Next report scheduled: 5/20/2021

Cases Reported to Stark LHDs		
Data as of 5.13.2021 12:30		
Positive/Confirmed	27,567	
Hospitalized	1,831	6.64%
ICU Admissions	149	0.54%
Deaths in Confirmed Cases	822	2.98%
Probable Cases	4,969	
Deaths in Probable Cases	139	

Cases Reported to ODH		
Data as of 5.13.2021 14:00		
Positive/Confirmed	912,682	
Hospitalized*	57,809	6.33%
ICU Admissions*	7,955	0.87%
Probable Cases	175,661	
COVID related deaths of Ohio Residents		
19,439		
*Hospitalized & ICU includes confirmed & probable		

Descriptive Statistics for Stark County Confirmed Cases

Gender			
	Confirmed Cases		Deaths
Male	12,123	44.0%	435
Female	15,130	54.9%	387
Unknown	314	1.1%	0
Total	27,567		822

Ethnicity			
	Hispanic	Non-Hisp	Unknown*
Count	372	14,811	12,384
%	1.3%	53.7%	44.9%

Race						
	White	Black	Asian/Pacific Islander	American Indian/Alaskan Native	Other	Unknown*
Count	15,500	1,897	119	48	702	9,301
%	56.2%	6.9%	0.4%	0.2%	2.5%	33.7%
*Unknown counts includes refused to answer responses						

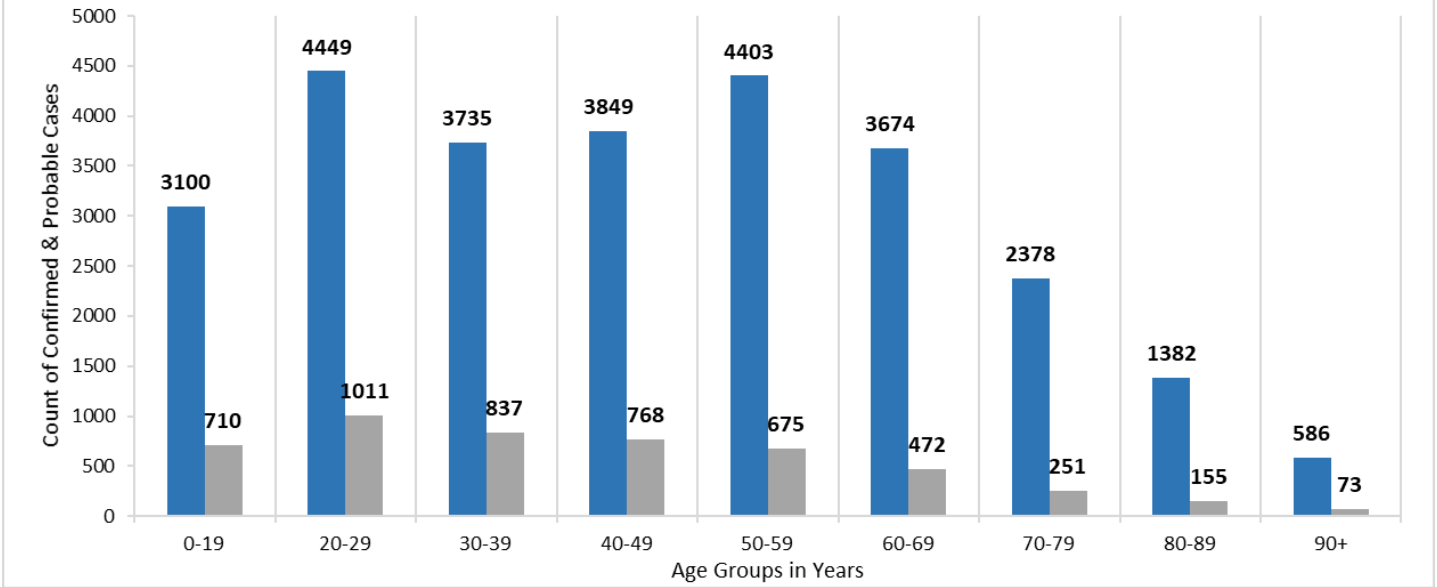
Hospitalization Information for Stark County Confirmed Cases-Cumulative Counts

Hospitalized			If hospitalized, in ICU?			Discharged from Hospital	
Yes	1,831	6.6%	Yes	149	8%	ICU	114
No	25,333	91.9%	No	1,682	92%	Other	831
Unknown	403	1.5%	Some cases may be discharged due to death.				

Stark County Vaccination Update as of 5/13/2021

Current Vaccination Groups Eligible	Vaccine Started	Vaccine Completed
Phases 1A, 1B, 1C, 1D, 1E, 2A, 2B, 2C, 2D	Count: 144,753	Count: 124,294
	39.06% of population	33.54% of population

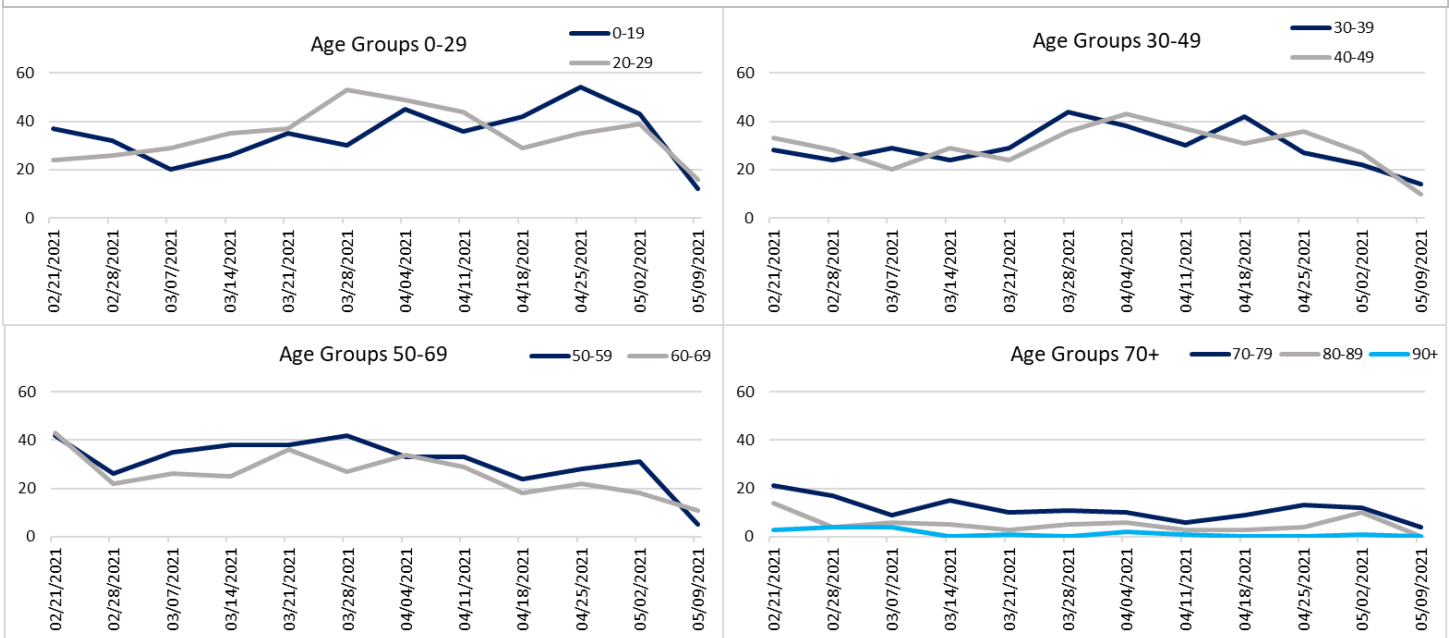
Count of Confirmed & Probable Cases by Age Group in Stark County
Graph 1



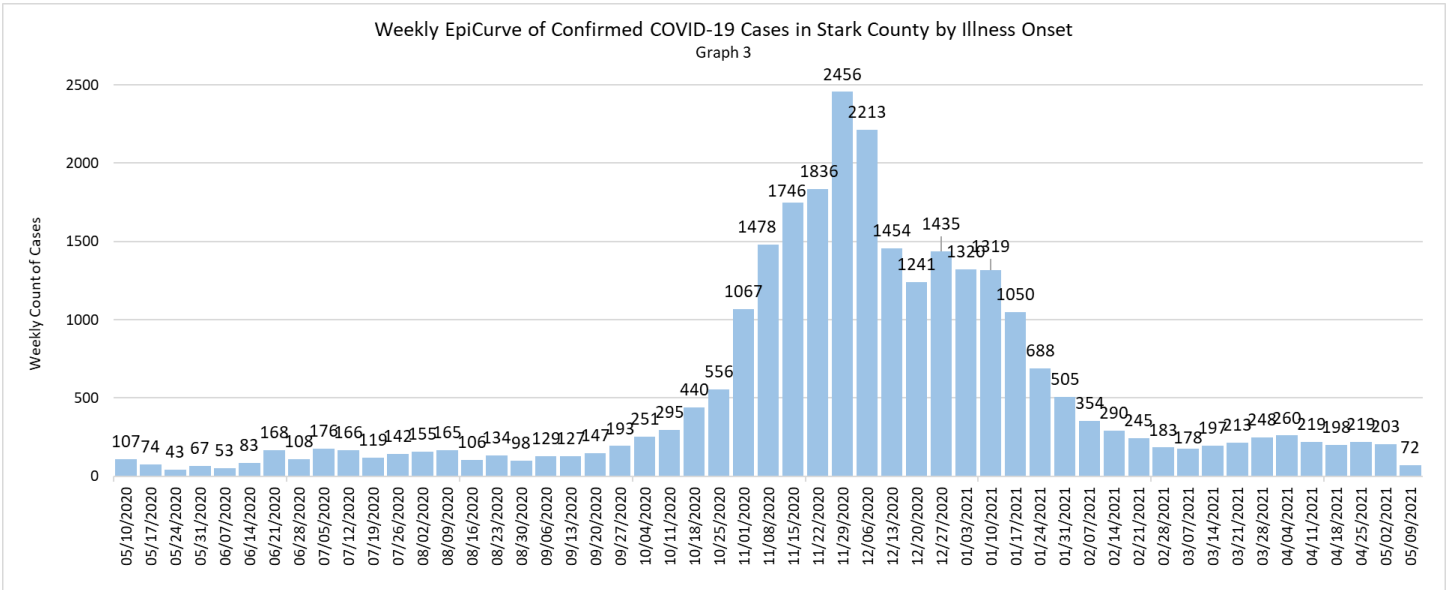
Graph 1 shows the cumulative number of laboratory-confirmed and probable cases by age group. There are 17 probable cases and 11 confirmed cases in which date of birth is currently unknown and not shown in graph above.

Graph 2 shows a breakdown of confirmed cases by week by age groups. As with all data contained in this report, caution is advised when looking at the past 2-3 weeks of data due to delays in testing results. Only 12 weeks of data is shown in graphs below.

Weekly Counts of Confirmed Cases by Illness Onset Date and Age Group
Graph 2

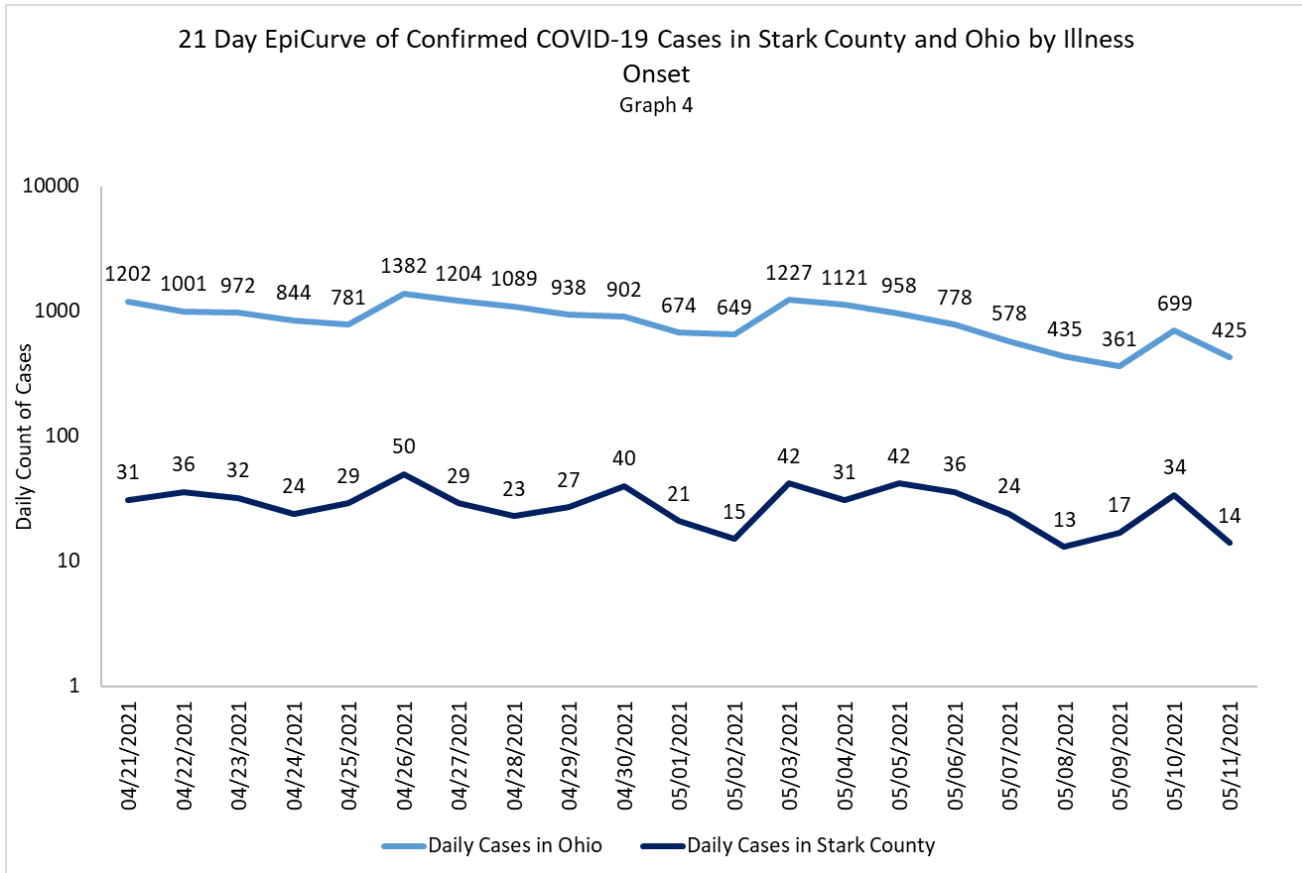


EPIDEMIOLOGICAL REPORT ON COVID-19

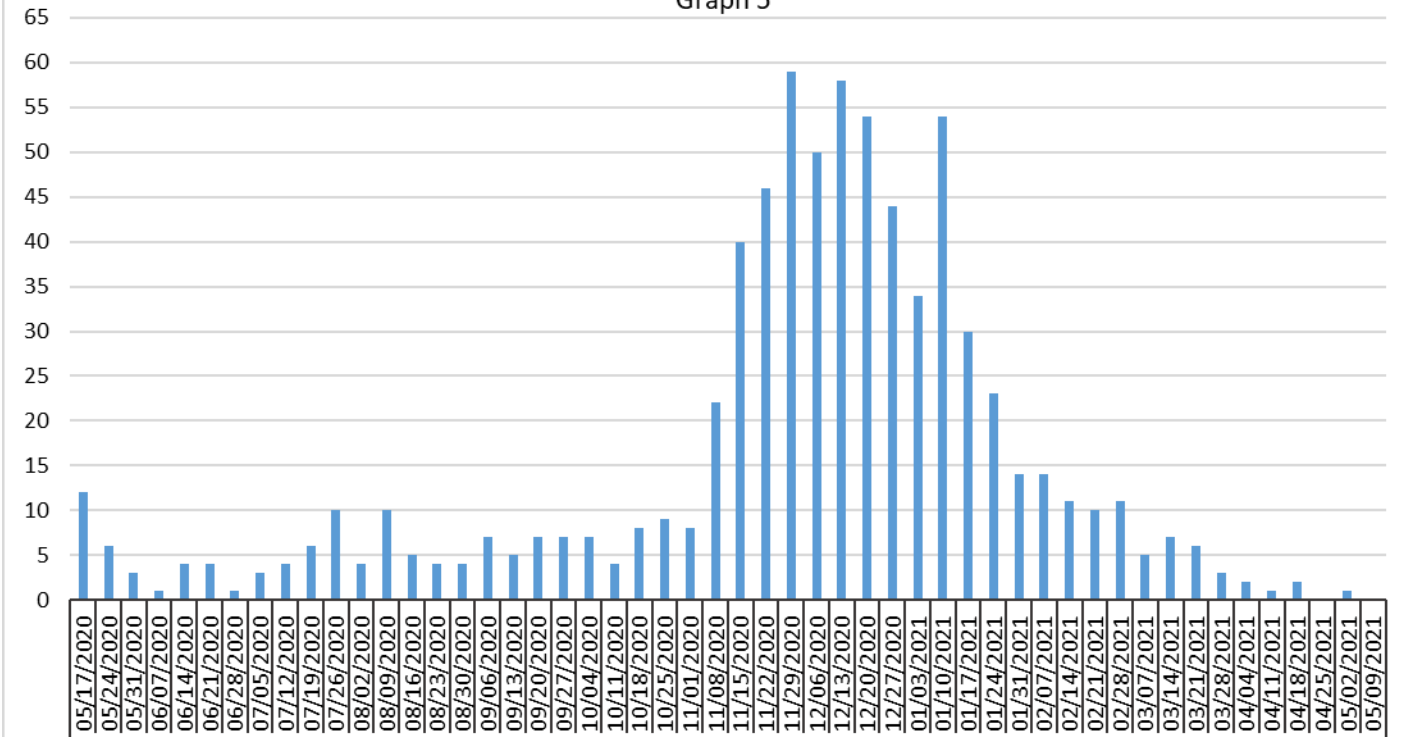


Graph 3 shows the EpiCurve which displays the total number of laboratory-confirmed cases per week, based on the illness onset date for Stark County. If the illness onset date is not available, the earliest known date is utilized, which could be the date the specimen was collected, the date of the test results or the date reported to the local health department. Counts will change as additional information is collected. Stark County’s first confirmed case reported an illness onset date of 2/25/2020 but graph only contains 52 weeks of data. **This data only includes data up until 12:00 pm on 5/13/2021.**

To help highlight short-term daily changes, Graph 4 shows daily counts of laboratory confirmed cases for a 21-day period.

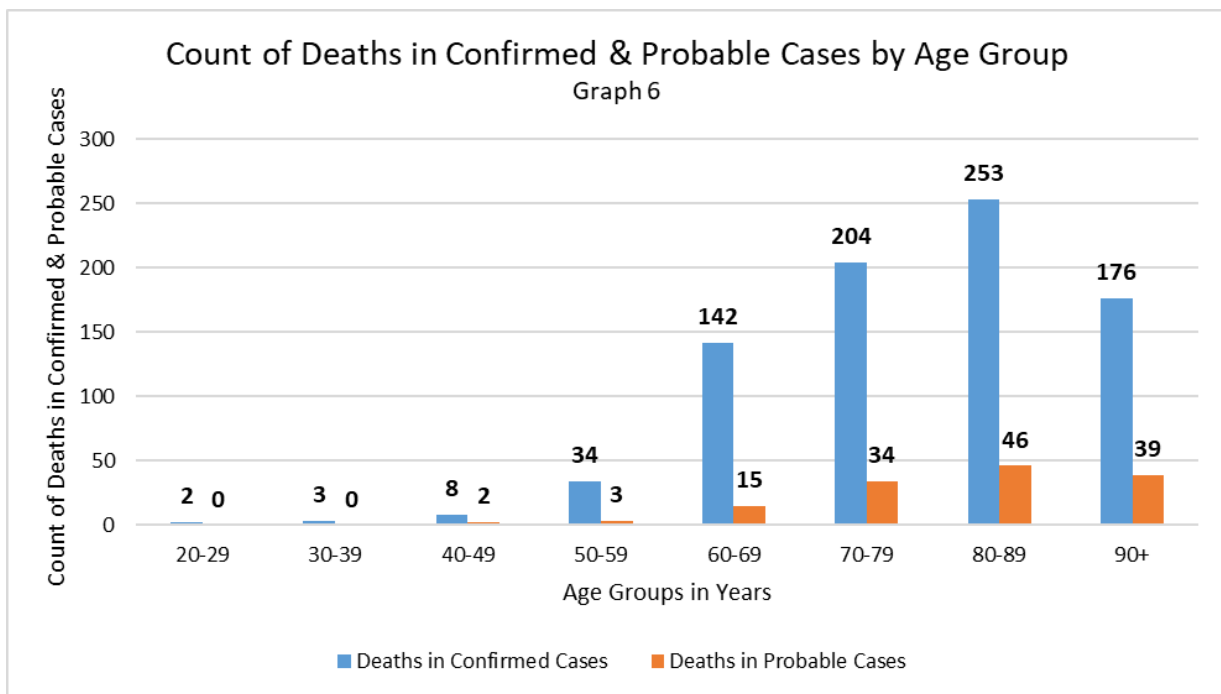


Count of Deaths in Confirmed Cases by Week
Graph 5

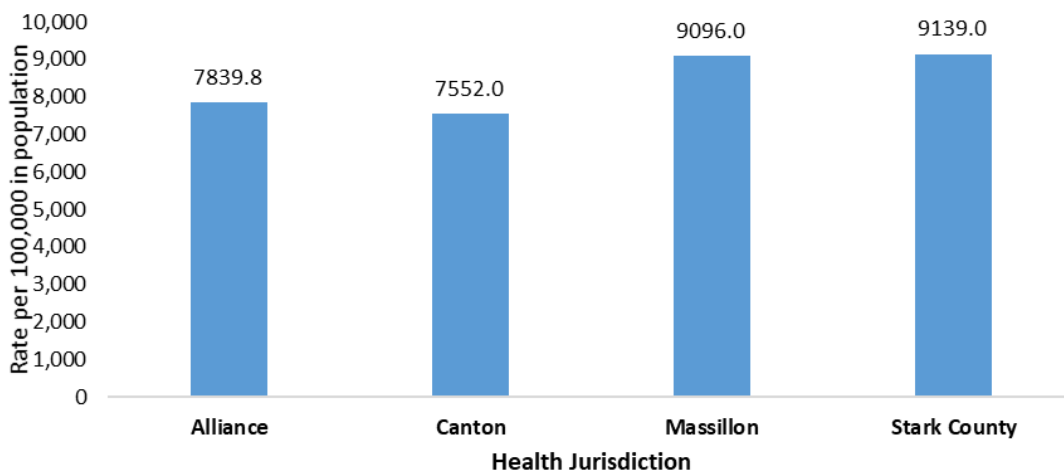


Graph 5 is a breakdown of death counts in laboratory-confirmed cases by week in which the death occurred. Includes only deaths reported to the local health department as of 12:00 pm on 5/13/2021. This isn't an automated process which is why it may be a week or longer for a death to be documented. **Please see last page of report for additional information regarding deaths.**

Graph 6 shows the breakdown in deaths in confirmed and probable cases by age group. Additional age groups will be added as needed.



Rate of Confirmed and Probable Cases by Health Jurisdiction
Graph 7

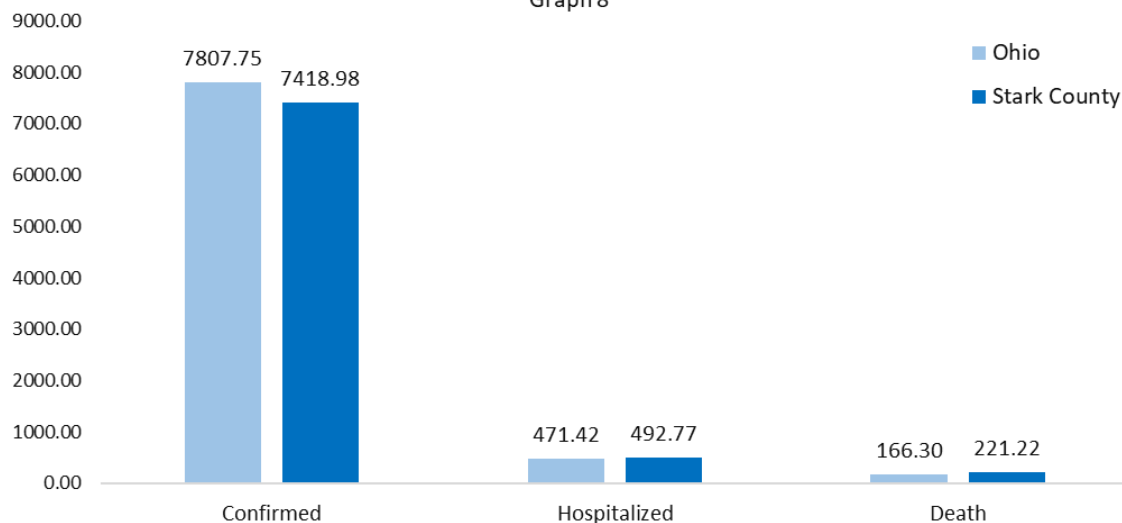


Health Jurisdiction	Probable Cases	Confirmed Cases	Total
Alliance	217	1533	1750
Canton	825	4496	5321
Massillon	370	2578	2948
Stark County	3557	18,960	22,517

Rates=(case count/population)*100000

Graph 7 shows the rate of cumulative confirmed and probable cases by Stark County jurisdictions. Alliance, Canton and Massillon jurisdictions covers those within those particular city limits. Stark County jurisdiction covers all other areas outside of those three city limits. Rates calculated by 2018 population census data.

Rates of Confirmed Cases by Population
Graph 8



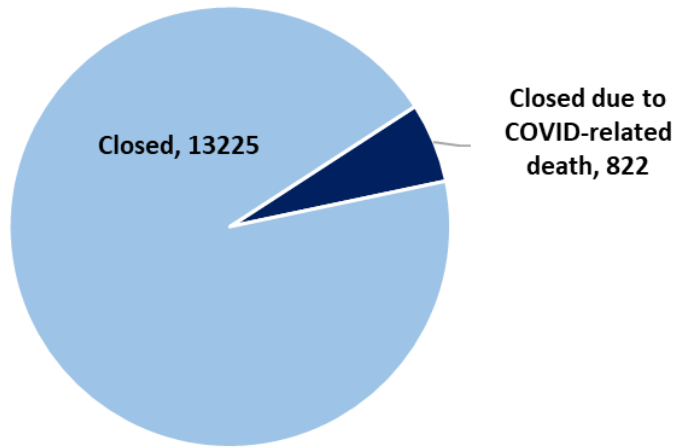
Counts of Cases	Ohio	Stark County
Confirmed	912,682	27,567
Hospitalized	55,106	1,831
Deaths	19,439	822

Rates based on 2018 population from data.census.gov.
Rates=(count/population)*100000

Graph 8 shows the rates dependent on the 2018 population in Ohio and Stark County. This graph works to compare cases in different populations by normalizing the cases per 100,000 persons.

- Ohio’s rate of laboratory confirmed cases is 1.1x higher than those in Stark County.
- Stark County’s rate of laboratory confirmed cases who require hospitalization is 1.0x higher than Ohio’s rate.
- Stark County’s rate of death due to COVID-19 complications is 1.3x higher than Ohio’s rate.

Closed Confirmed Cases
Graph 9



Graph 9 is the count of confirmed cases closed or closed due to death. Stark County has a total of 14,047 cases closed of which 822 are due to death.

Cases can be closed for the following reasons:

- The person passed away. Can be either COVID-related or not COVID-related.
- Symptoms have resolved in that case.
- The person is no longer being followed by the local health department.

We have removed the graph associated with health care workers and long-term care facilities. For more information on long-term care facilities including breakdown by facility and by resident/staff, please visit:

<https://coronavirus.ohio.gov/wps/portal/gov/covid-19/dashboards/long-term-care-facilities/cases>

<https://coronavirus.ohio.gov/wps/portal/gov/covid-19/dashboards/long-term-care-facilities/mortality>

Background from www.cdc.gov: Coronavirus disease 2019 (COVID-19) is a respiratory illness that can spread from person to person. The virus that causes COVID-19 is a novel coronavirus that was first identified during an investigation into an outbreak in Wuhan, China.

Confirmed

- Meets confirmatory laboratory evidence. NOTE: Asymptomatic infections are reportable as confirmed cases.

Probable

- Meets presumptive laboratory evidence AND was reported on or after November 1, 2020; OR
 - o For reports received prior to November 1, 2020: meets presumptive laboratory evidence AND either clinical criteria OR epidemiologic linkage; OR
- Meets clinical criteria AND epidemiologic linkage with no confirmatory laboratory testing performed for SARS-CoV-2; OR
- Meets vital records criteria with no confirmatory laboratory evidence for SARS-CoV-2.

Counts and rates are based on date of illness onset. If onset date is unknown, the earliest known date is utilized. Any rates based on counts less than 10 are considered unreliable and caution should be exercised when interpreting. Due to testing restrictions, data may be skewed. Report compiled by Canton City Public Health.

Data is sourced from: coronavirus.ohio.gov, ODH data warehouse, and census.gov. “These data were provided by the Ohio Department of Health. The Department specifically disclaims responsibility for any analyses, interpretations or conclusions.”

Beginning March 2, 2021, ODH changed from using Ohio Disease Reporting System (ODRS) for mortality data to utilizing Electronic Death Registration System (EDRS) data. This allows only deaths which have been verified by the CDC’s National Center for Health Statistics (NCHS) to be included on the ODH website. This data is not updated daily. For the time being, Stark County will continue to utilize mortality data for ODRS with the disclaimer that data is considered preliminary and subject to change.

For information regarding test priorities, please visit: <https://coronavirus.ohio.gov/static/docs/COVID-19-Testing-Guidance.pdf>

For information regarding testing sites, please visit: <https://coronavirus.ohio.gov/wps/portal/gov/covid-19/testing-ch-centers/>

For information on Restart Stark, including guidance and resources for Stark County, please visit: <https://coronavirus-response-stark-county-resources-starkcountyohio.hub.arcgis.com/>

For information on the Ohio Public Health Advisory System, please visit: <https://coronavirus.ohio.gov/wps/portal/gov/covid-19/public-health-advisory-system/>

For information on testing Statewide, please visit: <https://coronavirus.ohio.gov/wps/portal/gov/covid-19/dashboards/key-metrics/testing>

For information on vaccinations, please visit: <https://coronavirus.ohio.gov/wps/portal/gov/covid-19/covid-19-vaccination-program>